

ARIES OFF ROAD

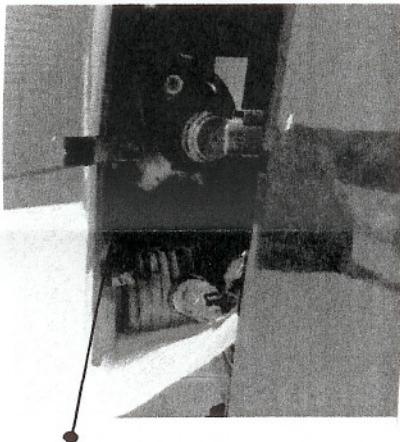
INSTALLATION INSTRUCTIONS TAILLIGHT GUARD PART # T7764 2004 NISSAN PATHFINDER ARMADA

PARTS LIST

- (1)- TAILLIGHT GUARD PASSENGER SIDE
- (1)- TAILLIGHT GUARD DRIVER SIDE
- (2)- SUPPORT BRACKETS
- (2)- # 6 x 1/2" SCREWS, (4)- #10 x 1" SCREWS, (4)- #10 FLAT WASHERS

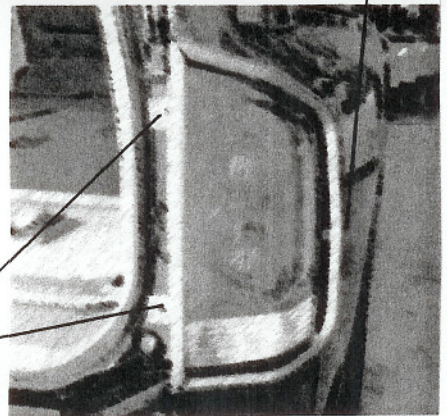
INSTALLING TAILLIGHT GUARD

- 1) START WITH THE PASSENGER SIDE, OPEN THE REAR LIFT GATE AND REMOVE THE SCREWS SECURING THE TAIL LIGHT TO THE BODY.
- 2) CAREFULLY UNSNAP THE TAIL LIGHT UNTIL IT IS FREED FROM THE HOUSING.
- 3) REMOVE THE EXISTING TORX SCREW FROM THE TAIL LIGHT LANCE LOCATED ON THE CENTER EDGE, ATTACH THE SUPPORT BRACKET TO THE CENTER EDGE USING THE EXISTING TORX SCREW. (FLAT EDGE).
- 4) SNAP THE TAIL LIGHT ASSEMBLY BACK INTO BODY.
- 5) POSITION REAR TAILLIGHT GUARD OVER TAIL LIGHT, MAKING SURE THAT THE MOUNTING BRACKETS ON THE TAILLIGHT GUARD ARE SEATED WHERE THE TAIL LIGHT SCREWS WERE FORMERLY LOCATED.
- 6) SECURE ASSEMBLY TO JAMB USING THE # 10 x 1" SCREWS AND # 10 FLAT WASHERS. SUPPORT BRACKET USE THE # 6 x 1/2" SCREWS.
- 7) RE-PEAT STEPS 1 THROUGH 6 ON THE DRIVER SIDE.



USE THE TORX SCREW TO ATTACH
SUPPORT BRACKET

USE THE # 6 x 1/2" SCREW



USE THE # 10 x 1" SCREWS